



KENYA METEOROLOGICAL DEPARTMENT KITUI COUNTY METEOROLOGICAL OFFICE

SEASONAL WEATHER ADVISORIES FOR KITUI COUNTY MARCH-APRIL-MAY (MAM) 2024 SEASON

1. Agro-weather advisory:

These advisories were co-produced at a Participatory Scenario Planning (PSP) workshop involving farmers, Ministry of Agricultural and Livestock Extension Staff, Indigenous Traditional Forecasters (ITK) and Kenya Meteorological Department staff. The PSP workshop was sponsored by CIAT-AICCRA Programme.

The weather forecast for March-April-May 2024 season is expected to be Near Normal (NN) to slightly Above Normal (AN). The onset is predicted from fourth week of March to first week of April (23rd March to 7th April). The cessation is expected to be; (a) in the first to second week of May (1st to 14th May 2024) for Lower Zone and; (b) second to third week of May (8th to 21st May 2024) in both Middle Zone and Upper Zone. The rainfall distribution in time and space is expected to be fair to bad in Lower Zone and fair to good in both Middle Zone and Upper Zone. The length of the rain period will be 30-45 days. The map below shows the spatial distribution of the amount of rainfall expected in the entire MAM 2024 season (as compared to a normal MAM season).

2. Weather forecast for the March-April-May 2024 Season:

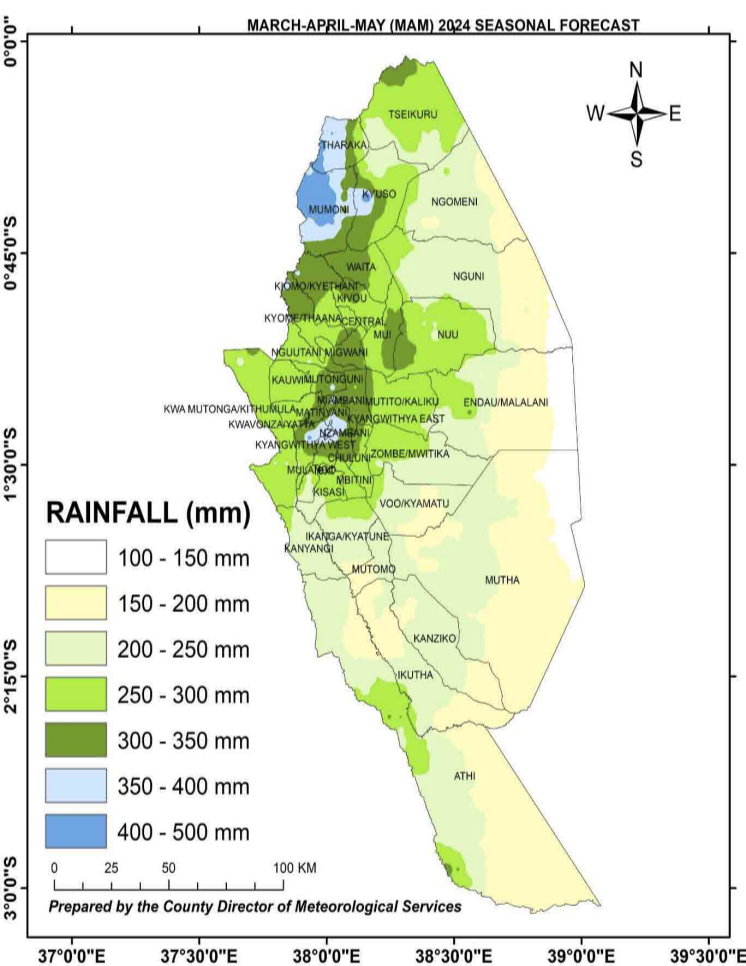


Fig 1. March-April-May (MAM) 2024 seasonal weather forecast for Kitui County

ZONE	ONSE	CESSATION	LENGTH OF SEASON
Lower Zone: 100-200mm Athi, Ikutha, Kanziko/Simisi, Mutomo/Kibwea, Mutha, Mwitika area, Kaliku area, Voo/Kyamatu, Endau/Malalani, Nguni, Lower Nuu and Ngomeni	23rd of March to 7th April 2024	The rains will end between 1st and 14th May 2024	30-45 days
Middle Zone: 200-300mm Kanyangi, Yatta/Kwa Vonza, Kisasi, Mbitini, Ikanga/Kyatune, Zombe area, Mutito area, Lower Nzambani, Chuluni, Mulango, Kyangwithya West, Kauwi, Kwa Mutonga/Kithumula, Lower Mutonguni, Nguutani, Kiomo/Kyethani, Kyome/Thaana, Mui, Central, Kivou, Waita, Upper Nuu, Kyuso, Tharaka (Tharaka Location), Tseikuru	23rd of March to 7th April 2024	The rains will end between 8th and 21st May 2024	30-45 days
Upper Zone: 300-500mm Kyangwithya East, Township, Upper Nzambani, Miambani, Matinyani, Upper Mutonguni, Migwani, Mumoni, Tharaka (Kanthungu Location)	23rd of March to 7th April 2024	The rains will end between 8th and 21st May 2024	30-45 days

Table 1. Expected onset and cessation dates for various zones in Kitui County for MAM 2024

3. Forecast Summary

- Early land preparation: before 22nd March 2024
- Repair of soil and water conservation structures: Terraces, Zai Pits, basins, water ponds
- Repair of soil and water conservation structures; Terraces, Zai Pits, basins and water ponds before onset and during rainy period
- Repair of water storage structures before onset of rains
- Plant ecologically suitable certified seeds as indicated in tables 1, 2 and 3 below
- Practices: Conversation Agriculture (CA); Ripping, planting stations
- Pre-germination (seed soaking); Seed preparation
- Scale up manure and fertilizer application (basal & top dressing)
- Timely weed control
- Timely and proper pests and disease control
- Proper spacing of crops
- Plant ecologically suitable certified seeds as indicated above
- Pitting for fruits and forest Trees

4. Specific Agro-weather Advisories for the Lower zones:

4.1 Lower Zone (100-200 mm)

Wards: Athi, Ikutha, Kanziko/Simisi, Mutomo/Kibwea, Mutha, Mwitika area, Kaliku area, Voo/Kyamatu, Endau/Malalani, Nguni, Lower Nuu and Ngomeni wards

	RECOMENDATIONS	RESPONSIBLE
Hazards and Risks	Heavy storms, flash floods, pests and diseases outbreak, strong winds	MDAs
Opportunities	General water harvesting	KMD
Advisories for Cow Peas	M66, K80, KVVU-27-1, Ken Kunde, KK1, Locals varieties (Kalitho and Ndamba); Spacing 60x20cm	MoAL
Advisories for Green grams	KS20 (Makueni), N26 (Nylon), Biashara, Karemba, Ndengu Tosha; Spacing 45x15cm	MoAL
Advisories for Sorghum	Gadam, Sila, Seredo, Serena, advanta; Spacing 60x20cm to 75x20cm	MoAL
Advisories for Millets	Finger millet, KPM 1 & 2, Biofortified millet; Spacing 60x20cm	MoAL

Table 2. Agro-weather advisory for Lower Zone with 100-200 mm of rainfall

4.2 Middle Zone (200-300mm)

Wards: Kanyangi, Yatta/Kwa Vonza, Kisasi, Mbitini, Ikanga/Kyatune, Zombe area, Mutito area, Lower Nzambani, Chuluni, Mulango, Kyangwithya West, Kauwi, Kwa Mutonga/Kithumula, Lower Mutonguni, Nguutani, Kiomo/Kyethani, Kyome/Thaana, Mui, Central, Kivou, Waita, Upper Nuu, Kyuso, Tharaka (Tharaka Location), Tseikuru wards

	RECOMENDATIONS	RESPONSIBLE
Hazards and Risks	Heavy storms, flash floods, pests and diseases outbreak, strong winds	MDAs
Opportunities	General water harvesting	KMD
Advisories for Cow Peas (Nzooko)	K80, M66, KVVU-27-1, KENKUNDE, Local varieties (Ndamba & Kalitho); Spacing 60x20cm	MoAL
Advisories for Dolichos (Mbumbu/Nzavi)	DL1002; Spacing 100cm x 50cm	MoAL
Advisories for Green Grams (Ndengu/Ndakitithi)	Gadam, Sila, Seredo, Serena, Advanta; Spacing 60x20cm to 75x20cm	MoAL
Advisories for Sorghum	Gadam, Sila, Seredo, Serena, advanta, KARI Mtama 1, Egerton F1; Spacing 60x20cm to 75x20cm	MoAL
Advisories for Millets	Pearl millet1, Pearl millet 2, Biofortified millet; Spacing 60x20cm	MoAL

Table 3. Agro-weather advisory for Middle Zone with 200-300mm of rainfall

4.3 Upper Zone wards (300 - 500 mm)

Wards: Kyangwithya East, Township, Upper Nzambani, Miambani, Matinyani, Upper Mutonguni, Migwani, Mumoni, Tharaka (Kanthungu Location)

	RECOMENDATIONS	RESPONSIBLE
Hazards and Risks	Heavy storms, flash floods, pests and diseases outbreak, strong winds	MDAs
Opportunities	General water harvesting	KMD
Advisories for Maize (Mbemba)	Sungura, Haraka, Mituki, Duma 43, Makueni; Spacing 90x30cm	MoAL
Advisories for Beans (Mboso)	Nyota, Kat B1 (Ka Yellow), Katx 56, GLP 1000 (Mwezi moja), Kakunzu; Spacing 45x15cm	MoAL
Cow Peas (Nzooko)	M66, K80, KVVU-27-1 & KENKUNDE, Local variety (Kalitho & Ndamba); Spacing 60x20cm	MoAL
Advisories for Green Grams (Ndengu/Ndakitithi)	KS20 (Makueni), N26 (Nylon), Karemba, Biashara, Ndegu Tosha, Local varieties; Spacing 45x15cm	MoAL
Advisories for Grain vegetable	Grain amaranth (Telele); 90cm x 30cm by drilling	MoAL
Advisories for African leafy vegetables	Vegetable amaranth (Telele); 75cm x 30cm by drilling Managu (Matulu) Spider weed (Sage); 60cm x 20cm by drilling	MoAL

Table 4. Agro-weather advisory for Upper Zone with 300-500mm of rainfall



Additional Information

SPECIFIC ADVISORIES FOR LIVESTOCK SECTOR

Pastures/Fodder to be established:

- Pastures/Fodder to be established
- Panicum maximum (Mbwea)- Middle and Upper Zones
- Chloris Roxburghiana (Kilili)- All Zones
- Chloris Gayana (Boma Rhodes)- Middle and Upper Zones
- Bracharia Species- Middle and Upper Zones
- Eragrostis Superba (Mbeetwa)- All Zones
- Cenchrus ciliaris (Ndata Kivumbu) - Middle and Lower Zone

Recommended Actions:

- Ration feeding/Paddock/Conservation feeding - Middle and Upper Zones
- Destocking for appropriate carrying capacity - Middle and Upper Zones
- Adoption of home feed formulation - Middle and Upper Zones
- Proper housing- All Zones
- De-worming- All Zones
- Tick control- All Zones
- Restocking of fish ponds- All Zones
- Rehabilitation of fish ponds- All Zones



Important Note

This information provided here is based on the March-April-May (MAM) 2024 seasonal weather forecast issued by Kenya Meteorological Department (KMD).

The information should be used in conjunction with the forecast updates issued by KMD and technical advice provided by the nearest Ministry of Agricultural and Livestock extension officers at ward level.



Further Advisory

- Prepare land early.
- Practice the following conservation agriculture methods-tilling and manuring, repair of soil and water conservation structures.
- Planting dates-dry planting and/or wet planting immediately rain sets.
- Pest and disease control-farmers should monitor and manage pests and diseases.
- Weed control-early and timely to avoid competition.
- Harvest water by following methods-roof top, terraces, cut-offs, etc.
- Farmers are encouraged to seek advice on application of climate information from KMD County office and additional information on the best farming practices from the local agricultural extension office situated at ward offices in their area.
- Farmers are encouraged to preserve and store pasture/fodder for their animals. They should also preserve and store farm produce after harvesting to ensure food security and improved nutrition.



Contact details:

KENYA METEOROLOGICAL DEPARTMENT
KITUI COUNTY METEOROLOGICAL OFFICE
P.O. Box 205-90200 Kitui
Tel: +254715255171/Email: mbithi_d@yahoo.com
Website: www.meteo.go.ke